

ESCORTS F-20



New Generation Hydraulic Mobile Crane

- 20 T capacity crane with 19.5m vertical height
- Front wheel drive machine
- Best traction go connect during crane operations
- First crane able to lift 15 T through snatch block.
- Travel long distance on own power.
- Front mounted cabin with steering wheel
- Chassis type design, optimised geometry for enhanced stability and control.
- Equipment monitoring system (Telematics) as standard fitment.
- Best in class Creep Speed



Accessories as shown in the picture may not be the part of standard fitment and are subject to change without prior notice.

SAFE • STRONG • STURDY

ESCORTS F-20

Specifications

Rated Capacity

20 tonne at	1.5 m radius
900 Kg at	16 m radius
Max hook height	19.5 m

Vehicle Performance

Speed	38 kmph max
Creep Speed	1.3 kmph

Axles

Front	Rigidly mounted front wheel drive axle
Rear	Mounted with semi-elliptical springs

Engine

Diesel engine of VOLVO Eicher make, Model E 483 TCIC, Turbo charged water cooled, developing 101 HP@ 2400 rpm or equivalent engine.

Transmission

VECV make ET6055 Syncromesh gear box
Auxiliary gear box for high & low range

Clutch

Single, dry type friction clutch plate

Brakes

- ✓ Dual circuit brakes
- ✓ Fully air operated brakes on front wheels and pneumatically assisted hydraulic brakes on rear wheel

Parking: Air operated, spring actuated fail safe brakes on front wheel

Tyres

8 Nos. 12-24, 20 PLY

Hydraulic System

Main Pump : Tandem Hydraulic vane Pump
Control Valve : Main control valve 3 spool double acting with built in relief valve & auxiliary valve
Outrigger Control valve: 2 Spool double acting type

Steering

Full power orbitrol with twin hydraulic double acting rams, 40° articulation on either side

Boom

4 part boom, 3 part hydraulically powered & fully synchronised
4th part power extended and manually pinned for safety

Hoist

15 T Hydraulically operated winch with 6 falls
snatch block
Built in safety brakes

Wheel Base

4.88 m

Dimensions

Overall length	10.9 m
Overall width	2.7 m
Overall height	3.3 m

Operating Weight

18565 kg

Wheel Track

Front	1.96 m
Rear	1.96 m

Turning Radius

7.85 m

Electrical System

24V, DC

Standard Accessories

All weather cabin with unrestricted visibility
Real View camera with LCD
Equipment monitoring system (telematics)
Front outriggers
Wheel guards
FM radio and mobile charger

Optional Accessories

Safe load indicator with hydraulic cut off
Spare wheel
Air conditioned cabin
RHINO hook
Man carrying basket
Fire extinguisher

ESCORTS F-20

Features

Control levers for ease and comfort



L.C.D. for rear view camera



Equipment Monitoring System and F.M. Radio with speakers



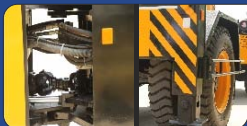
Mobile charging panel



▲ Spacious Cabin



▲ India's first front wheel drive crane. 6 fall snatch block & heavy duty hook for precision handling.



▲ Maintenance free articulated bearing. Wheel guard standards fitment for safety.



▲ Rugged front axle for guaranteed best traction during crane operation.



▲ Rear View Camera and Integrated Protected tail lights. High ground clearance



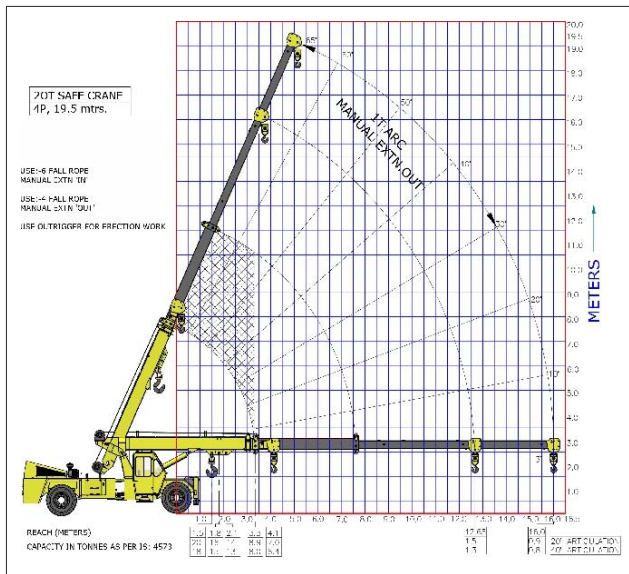
▲ Front outrigger with rectangular outer box for better load lifting, stability & safety. Front working light for better vision.



▲ Volvo Eicher Engine. Bonnet with gas studs Battery & air filter on top of rear chassis for ease of maintenance.

ESCORTS F-20

Load Chart



Use 6 Fall Rope Manual Extn 'IN' ——— Use 4 Fall Rope Manual Extn 'OUT' ——— Use Outriggers for Construction work

Features:

- First Crane with front wheel drive to ensure excellent traction
- 15T load lifting through snatch block
- Telematics as standard fitment
- Boom Height – 19.5m
- Travel Speed of 38 km/hr – idle for road running
- High Ground Clearance
- Creep Speed 1.3 Km/hr
- Reverse Camera & Wheel Guard
- FM Radio & Mobile Charger in Cabin
- Maintenance free articulation bearings